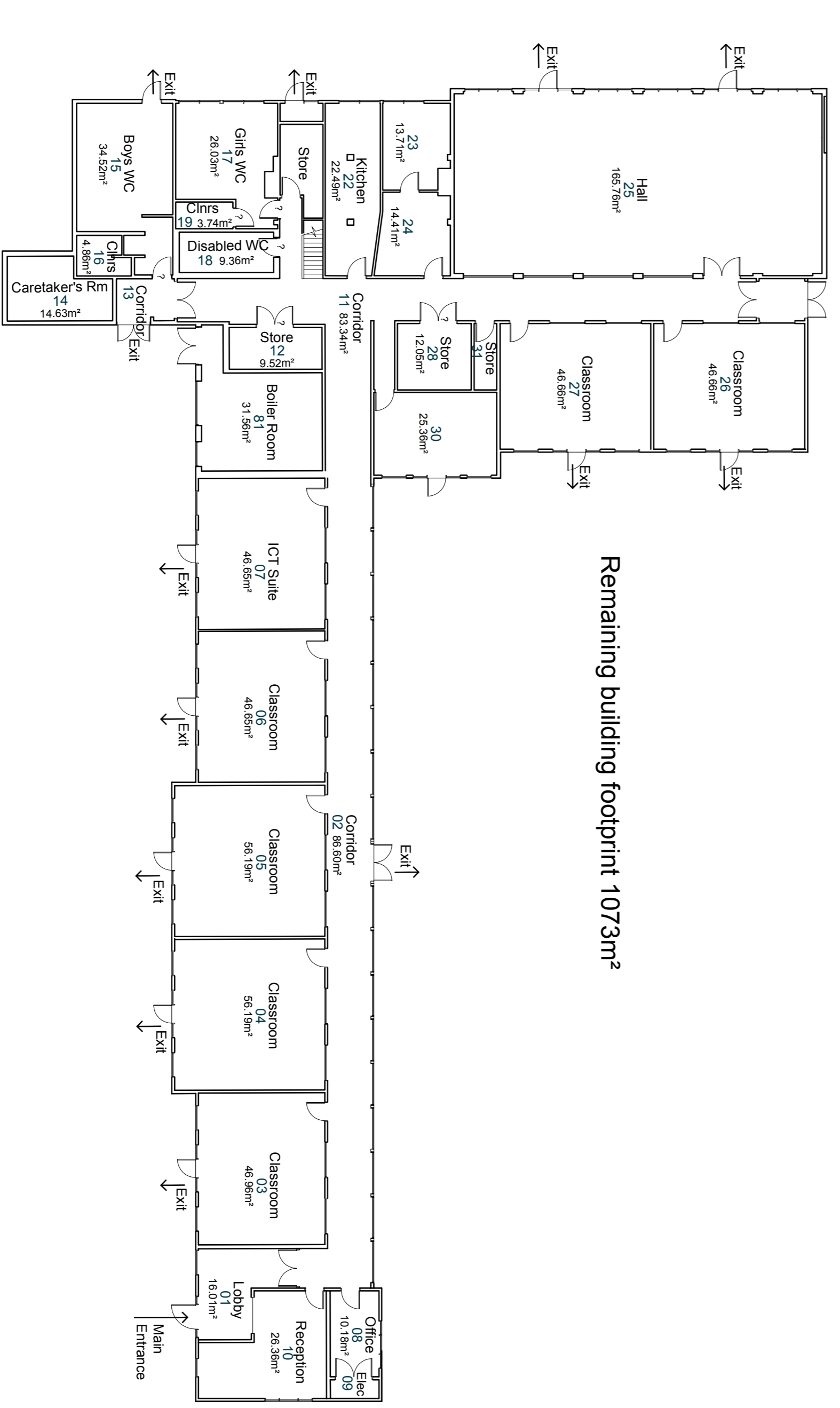
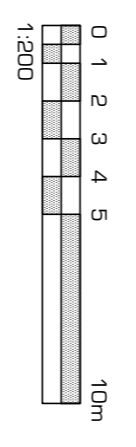
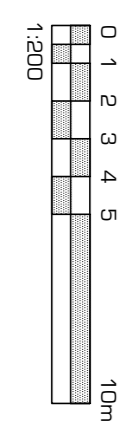


FIRST FLOOR PLAN 1:200



GROUND FLOOR PLAN 1:200



Remaining building footprint 1073m<sup>2</sup>

Rev:	date:	drawn:	approved:

**HUGGINS BROMAGE FERGUSON LTD**  
 RIBA Chartered Practice

109 Orsett Road Grays Essex RM17 5HA  
 Grays Thurrock (01375) 374415  
 Fax No (01375) 391524  
 reception@hbf-architects.co.uk  
 Web www.hbf-architects.co.uk

Client: THURROCK COUNCIL AND  
 TILBURY PIONEER ACADEMY  
 Project: REFURBISHMENT AND IMPROVEMENTS, TILBURY  
 MANDOR JUNIOR SCHOOL / TILBURY PIONEER  
 ACADEMY, 43 DICKENS AVE, TILBURY RM18 8HJ  
 Subject: FLOOR PLANS AS EXISTING

Scale:	Approved:	Drawn:
1:200 @ A1	GF	GF
Date:	Date:	Rev'n
	MAR 2022	02
Dwg No.:	5620	02